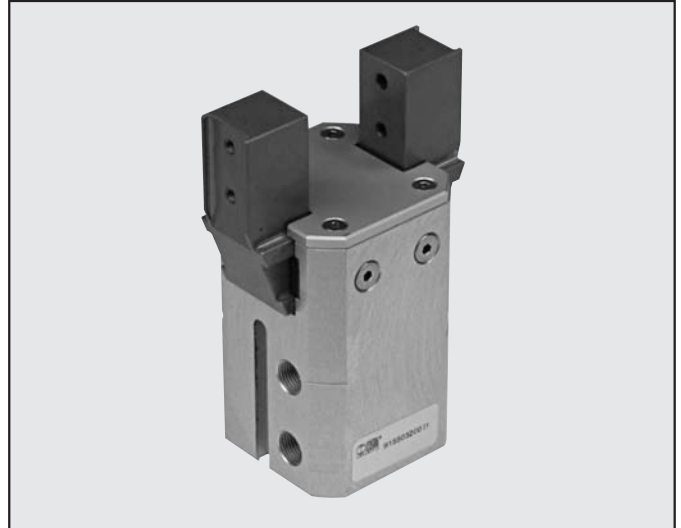


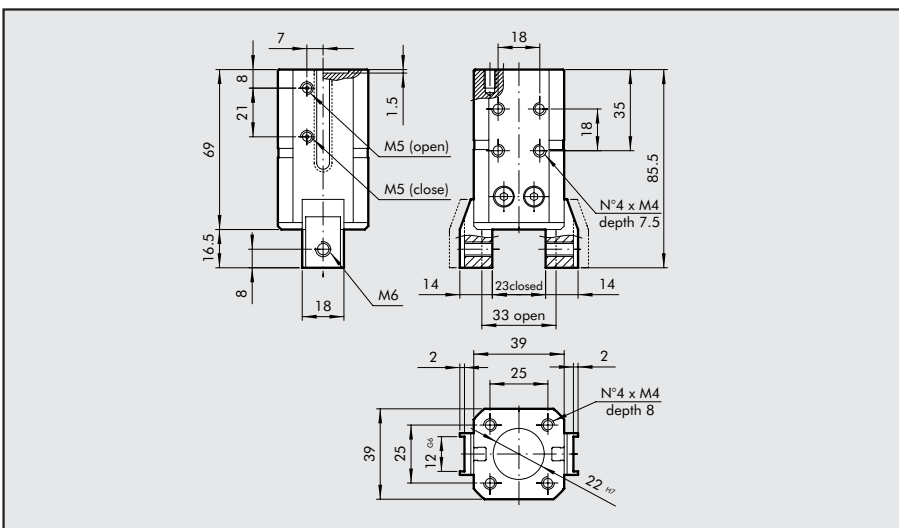
GRIPPER WITH 2 PARALLEL JAWS SERIES P1

- Dual-acting parallel gripper for internal and external clamping.
- Anodized aluminium alloy body and tempered steel jaws.
- Bottom or side fixing.
- All sizes come with magnets and sensor slots.



TECHNICAL DATA		P1-20	P1-32
Gaskets		NBR	
Operating pressure		2-8 bar (0.2 - 0.8 Mpa)	
Temperature range	°C	5 ÷ 70	
Fluid		Filter lubricated or lubricated air. Lubrication, if used, must be continuous.	
Bores	mm	20 - 32	
Clamping force (at 6 bar) 20 mm from the top surface	N	180	420
Single jaw stroke	mm	5	6.5
Weight	Kg	0.50	0.70

DIMENSIONS OF GRIPPERS P1-20

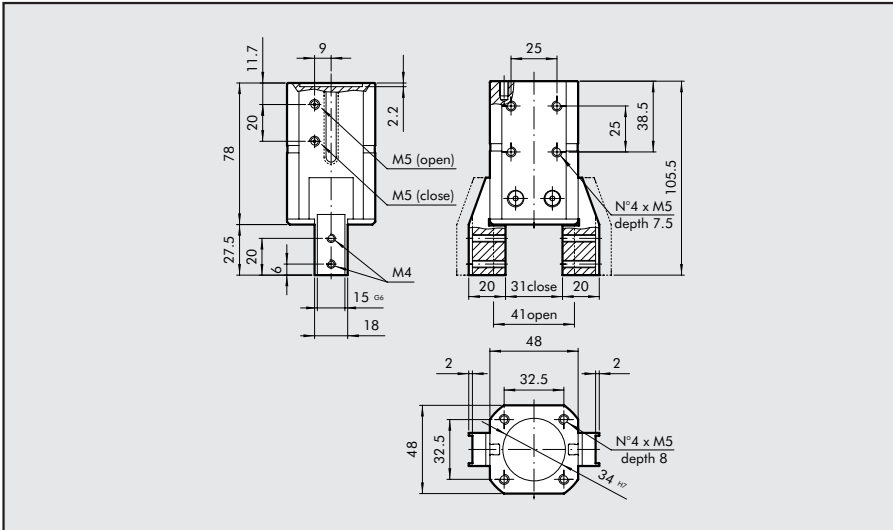


ORDERING CODES

Code	Description
W155020001	GRIPPER WITH 2 PARALLEL JAWS
	P1-20



DIMENSIONS OF GRIPPERS P1-32

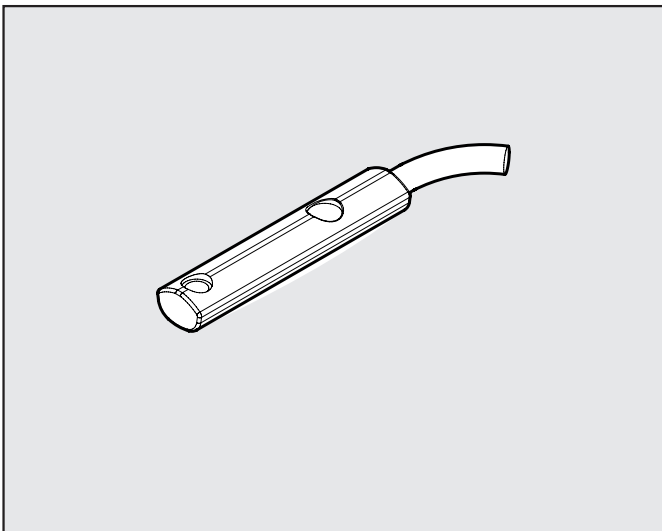


ORDERING CODES

Code	Description
W1550320001	GRIPPER WITH 2 PARALLEL JAWS P1-32

ACCESSORIES: MAGNETIC SENSORS

RETRACTABLE SENSOR WITH INSERTION FROM ABOVE



Code	Description
W0952025390	HALL N.O. SENSOR, VERTICAL INSERTION 2.5m
W0952029394	HALL N.O. SENSOR, VERTICAL INSERTION 300 mm M8
W0952022180	REED N.O. SENSOR, VERTICAL INSERTION 2.5m
W0952028184	REED N.O. SENSOR, VERTICAL INSERTION 300 mm M8
W0952125556	HALL N.O. SENSOR, VERTICAL INSERTION 2m ATEX

See page 1.2/28 for wiring diagram.

NOTES
